

ARM<sup>®</sup> Cortex<sup>®</sup>-A32 Processor  
Advanced SIMD and Floating-point  
Support  
Revision: r0p1

**Technical Reference Manual**



# ARM® Cortex®-A32 Processor Advanced SIMD and Floating-point Support

## Technical Reference Manual

Copyright © 2016, 2017 ARM Limited or its affiliates. All rights reserved.

### Release Information

### Document History

Issue	Date	Confidentiality	Change
0000-00	18 March 2016	Confidential	First release for r0p0
0001-00	04 March 2017	Non-Confidential	First release for r0p1

### Non-Confidential Proprietary Notice

This document is protected by copyright and other related rights and the practice or implementation of the information contained in this document may be protected by one or more patents or pending patent applications. No part of this document may be reproduced in any form by any means without the express prior written permission of ARM. **No license, express or implied, by estoppel or otherwise to any intellectual property rights is granted by this document unless specifically stated.**

Your access to the information in this document is conditional upon your acceptance that you will not use or permit others to use the information for the purposes of determining whether implementations infringe any third party patents.

THIS DOCUMENT IS PROVIDED “AS IS”. ARM PROVIDES NO REPRESENTATIONS AND NO WARRANTIES, EXPRESS, IMPLIED OR STATUTORY, INCLUDING, WITHOUT LIMITATION, THE IMPLIED WARRANTIES OF MERCHANTABILITY, SATISFACTORY QUALITY, NON-INFRINGEMENT OR FITNESS FOR A PARTICULAR PURPOSE WITH RESPECT TO THE DOCUMENT. For the avoidance of doubt, ARM makes no representation with respect to, and has undertaken no analysis to identify or understand the scope and content of, third party patents, copyrights, trade secrets, or other rights.

This document may include technical inaccuracies or typographical errors.

TO THE EXTENT NOT PROHIBITED BY LAW, IN NO EVENT WILL ARM BE LIABLE FOR ANY DAMAGES, INCLUDING WITHOUT LIMITATION ANY DIRECT, INDIRECT, SPECIAL, INCIDENTAL, PUNITIVE, OR CONSEQUENTIAL DAMAGES, HOWEVER CAUSED AND REGARDLESS OF THE THEORY OF LIABILITY, ARISING OUT OF ANY USE OF THIS DOCUMENT, EVEN IF ARM HAS BEEN ADVISED OF THE POSSIBILITY OF SUCH DAMAGES.

This document consists solely of commercial items. You shall be responsible for ensuring that any use, duplication or disclosure of this document complies fully with any relevant export laws and regulations to assure that this document or any portion thereof is not exported, directly or indirectly, in violation of such export laws. Use of the word “partner” in reference to ARM’s customers is not intended to create or refer to any partnership relationship with any other company. ARM may make changes to this document at any time and without notice.

If any of the provisions contained in these terms conflict with any of the provisions of any signed written agreement covering this document with ARM, then the signed written agreement prevails over and supersedes the conflicting provisions of these terms. This document may be translated into other languages for convenience, and you agree that if there is any conflict between the English version of this document and any translation, the terms of the English version of the Agreement shall prevail.

Words and logos marked with ® or ™ are registered trademarks or trademarks of ARM Limited or its affiliates in the EU and/or elsewhere. All rights reserved. Other brands and names mentioned in this document may be the trademarks of their respective owners. Please follow ARM’s trademark usage guidelines at <http://www.arm.com/about/trademark-usage-guidelines.php>

Copyright © 2016, 2017, ARM Limited or its affiliates. All rights reserved.

ARM Limited. Company 02557590 registered in England.

110 Fulbourn Road, Cambridge, England CB1 9NJ.

LES-PRE-20349

### Confidentiality Status

This document is Non-Confidential. The right to use, copy and disclose this document may be subject to license restrictions in accordance with the terms of the agreement entered into by ARM and the party that ARM delivered this document to.

Unrestricted Access is an ARM internal classification.

**Product Status**

The information in this document is Final, that is for a developed product.

**Web Address**

<http://www.arm.com>

# Contents

## ARM® Cortex®-A32 Processor Advanced SIMD and Floating-point Support Technical Reference Manual

	<b>Preface</b>	
	<i>About this book</i> .....	6
	<i>Feedback</i> .....	9
<b>Chapter 1</b>	<b>Functional Description</b>	
	1.1 <i>About the Advanced SIMD and floating-point support</i> .....	1-11
<b>Chapter 2</b>	<b>AArch32 Register Descriptions</b>	
	2.1 <i>Accessing the AArch32 feature identification registers</i> .....	2-13
	2.2 <i>AArch32 register summary</i> .....	2-14
	2.3 <i>Floating-Point System ID Register</i> .....	2-15
	2.4 <i>Floating-Point Status and Control Register</i> .....	2-17
	2.5 <i>Media and VFP Feature Register 0</i> .....	2-20
	2.6 <i>Media and VFP Feature Register 1</i> .....	2-22
	2.7 <i>Media and VFP Feature Register 2</i> .....	2-24
	2.8 <i>Floating-Point Exception Control register</i> .....	2-25
<b>Appendix A</b>	<b>Revisions</b>	
	A.1 <i>Revisions</i> .....	Appx-A-27

# Preface

This preface introduces the *ARM® Cortex®-A32 Processor Advanced SIMD and Floating-point Support Technical Reference Manual*.

It contains the following:

- [About this book](#) on page 6.
- [Feedback](#) on page 9.

## About this book

This book is for the Cortex<sup>®</sup>-A32 processor Advanced SIMD and floating-point support.

### Product revision status

The *mpn* identifier indicates the revision status of the product described in this book, for example, r1p2, where:

*rm* Identifies the major revision of the product, for example, r1.

*pn* Identifies the minor revision or modification status of the product, for example, p2.

### Intended audience

This manual is written for system designers, system integrators, and programmers who are designing or programming a System-on-Chip (SoC) that uses the Cortex<sup>®</sup>-A32 processor with the optional Advanced SIMD and floating-point support.

### Using this book

This book is organized into the following chapters:

#### **Chapter 1 Functional Description**

This chapter introduces the optional Advanced SIMD and floating-point support.

#### **Chapter 2 AArch32 Register Descriptions**

This chapter describes the AArch32 registers for the Cortex-A32 processor Advanced SIMD and floating-point support.

#### **Appendix A Revisions**

This appendix describes the technical changes between released issues of this book.

### Glossary

The ARM Glossary is a list of terms used in ARM documentation, together with definitions for those terms. The ARM Glossary does not contain terms that are industry standard unless the ARM meaning differs from the generally accepted meaning.

See the [ARM Glossary](#) for more information.

### Typographic conventions

*italic*

Introduces special terminology, denotes cross-references, and citations.

**bold**

Highlights interface elements, such as menu names. Denotes signal names. Also used for terms in descriptive lists, where appropriate.

monospace

Denotes text that you can enter at the keyboard, such as commands, file and program names, and source code.

monospace

Denotes a permitted abbreviation for a command or option. You can enter the underlined text instead of the full command or option name.

*monospace italic*

Denotes arguments to monospace text where the argument is to be replaced by a specific value.

**monospace bold**

Denotes language keywords when used outside example code.

<and>

Encloses replaceable terms for assembler syntax where they appear in code or code fragments. For example:

```
MRC p15, 0, <Rd>, <CRn>, <CRm>, <Opcode_2>
```

SMALL CAPITALS

Used in body text for a few terms that have specific technical meanings, that are defined in the *ARM glossary*. For example, IMPLEMENTATION DEFINED, IMPLEMENTATION SPECIFIC, UNKNOWN, and UNPREDICTABLE.

## Timing diagrams

The following figure explains the components used in timing diagrams. Variations, when they occur, have clear labels. You must not assume any timing information that is not explicit in the diagrams.

Shaded bus and signal areas are undefined, so the bus or signal can assume any value within the shaded area at that time. The actual level is unimportant and does not affect normal operation.

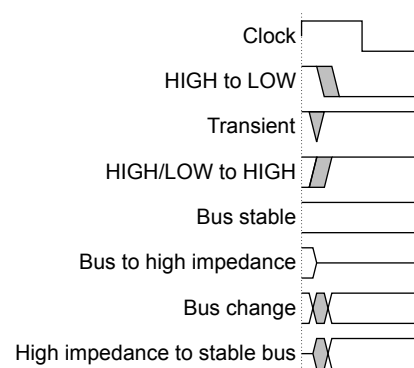


Figure 1 Key to timing diagram conventions

## Signals

The signal conventions are:

### Signal level

The level of an asserted signal depends on whether the signal is active-HIGH or active-LOW. Asserted means:

- HIGH for active-HIGH signals.
- LOW for active-LOW signals.

### Lowercase n

At the start or end of a signal name denotes an active-LOW signal.

## Additional reading

This book contains information that is specific to this product. See the following documents for other relevant information.

### ARM publications

- *ARM<sup>®</sup> Cortex<sup>®</sup>-A32 Processor Technical Reference Manual* (ARM 100241).
- *ARM<sup>®</sup> Cortex<sup>®</sup>-A32 Configuration and Sign-off Guide* (ARM 100244).
- *ARM<sup>®</sup> Cortex<sup>®</sup>-A32 Processor Integration Manual* (ARM 100245).
- *ARM<sup>®</sup> Cortex<sup>®</sup>-A32 Processor Cryptographic Extension Technical Reference Manual* (ARM 100242).
- *ARM<sup>®</sup> Architecture Reference Manual ARMv8, for ARMv8-A architecture profile* (ARM DDI 0487).

**Other publications**

- ANSI/IEEE Std 754-2008, IEEE Standard for Floating-Point Arithmetic.



## Feedback

### Feedback on this product

If you have any comments or suggestions about this product, contact your supplier and give:

- The product name.
- The product revision or version.
- An explanation with as much information as you can provide. Include symptoms and diagnostic procedures if appropriate.

### Feedback on content

If you have comments on content then send an e-mail to [errata@arm.com](mailto:errata@arm.com). Give:

- The title *ARM® Cortex®-A32 Processor Advanced SIMD and Floating-point Support Technical Reference Manual*.
- The number ARM 100243\_0001\_00\_en.
- If applicable, the page number(s) to which your comments refer.
- A concise explanation of your comments.

ARM also welcomes general suggestions for additions and improvements.

————— **Note** —————

ARM tests the PDF only in Adobe Acrobat and Acrobat Reader, and cannot guarantee the quality of the represented document when used with any other PDF reader.

---

# Chapter 1

## Functional Description

This chapter introduces the optional Advanced SIMD and floating-point support.

It contains the following sections:

- [1.1 About the Advanced SIMD and floating-point support on page 1-11.](#)

## 1.1 About the Advanced SIMD and floating-point support

The Cortex-A32 processor supports the Advanced SIMD and floating-point instructions in the A32 and T32 instruction sets.

The Cortex-A32 floating-point implementation:

- Does not generate floating-point exceptions.
- Implements all scalar operations in hardware with support for all combinations of:
  - Rounding modes.
  - Flush-to-zero.
  - Default *Not a Number* (NaN) modes.

# Chapter 2

## AArch32 Register Descriptions

This chapter describes the AArch32 registers for the Cortex-A32 processor Advanced SIMD and floating-point support.

It contains the following sections:

- [2.1 Accessing the AArch32 feature identification registers](#) on page 2-13.
- [2.2 AArch32 register summary](#) on page 2-14.
- [2.3 Floating-Point System ID Register](#) on page 2-15.
- [2.4 Floating-Point Status and Control Register](#) on page 2-17.
- [2.5 Media and VFP Feature Register 0](#) on page 2-20.
- [2.6 Media and VFP Feature Register 1](#) on page 2-22.
- [2.7 Media and VFP Feature Register 2](#) on page 2-24.
- [2.8 Floating-Point Exception Control register](#) on page 2-25.

## 2.1 Accessing the AArch32 feature identification registers

Software can identify the Advanced SIMD and floating-point features using the feature identification registers in the AArch32 execution state.

You can access the feature identification registers in the AArch32 execution state using the VMRS instruction, for example:

```
VMRS <Rt>, FPSID ; Read FPSID into Rt
VMRS <Rt>, MVFR0 ; Read MVFR0 into Rt
VMRS <Rt>, MVFR1 ; Read MVFR1 into Rt
VMRS <Rt>, MVFR2 ; Read MVFR2 into Rt
```

**Table 2-1 AArch32 Advanced SIMD and scalar floating-point feature identification registers**

<b>AArch32 name</b>	<b>Description</b>
FPSID	See <a href="#">2.3 Floating-Point System ID Register</a> on page 2-15.
MVFR0	See <a href="#">2.5 Media and VFP Feature Register 0</a> on page 2-20.
MVFR1	See <a href="#">2.6 Media and VFP Feature Register 1</a> on page 2-22.
MVFR2	See <a href="#">2.7 Media and VFP Feature Register 2</a> on page 2-24.

## 2.2 AArch32 register summary

The processor has several Advanced SIMD and floating-point system registers in the AArch32 execution state. Each register has a specific purpose, usage constraints, configurations, and attributes.

The following table gives a summary of the Cortex-A32 processor Advanced SIMD and floating-point system registers in the AArch32 execution state.

**Table 2-2 AArch32 Advanced SIMD and floating-point system registers**

Name	Type	Reset	Description
FPSID	RO	0x41034011	See 2.3 <i>Floating-Point System ID Register</i> on page 2-15.
FPSCR	RW	0x00000000	See 2.4 <i>Floating-Point Status and Control Register</i> on page 2-17.
MVFR0	RO	0x10110222	See 2.5 <i>Media and VFP Feature Register 0</i> on page 2-20.
MVFR1	RO	0x12111111	See 2.6 <i>Media and VFP Feature Register 1</i> on page 2-22.
MVFR2	RW	0x00000043	See 2.7 <i>Media and VFP Feature Register 2</i> on page 2-24.
FPEXC	RW	0x00000700	See 2.8 <i>Floating-Point Exception Control register</i> on page 2-25.

---

**Note**

The *Floating-Point Instruction Registers*, FPINST and FPINST2 are not implemented, and any attempt to access them is UNPREDICTABLE.

---

See the *ARM® Architecture Reference Manual ARMv8, for ARMv8-A architecture profile* for information on permitted accesses to the Advanced SIMD and floating-point system registers.

## 2.3 Floating-Point System ID Register

The FPSID characteristics are:

### Purpose

Provides top-level information about the floating-point implementation.

### Usage constraints

This register is accessible as follows:

EL0 (NS)	EL0 (S)	EL1 (NS)	EL1 (S)	EL2	EL3 (SCR.NS = 1)	EL3 (SCR.NS = 0)
-	-	Config	RO	Config	Config	RO

### Configurations

Access to this register depends on the values of CPACR. {cp10,cp11}, NSACR. {cp10,cp11}, and HCPTR. {TCP10,TCP11}. For details of which field values permit access at specific exception levels, see the *ARM® Architecture Reference Manual ARMv8, for ARMv8-A architecture profile*.

This register largely duplicates information held in the MIDR. ARM deprecates use of it.

### Attributes

FPSID is a 32-bit register.

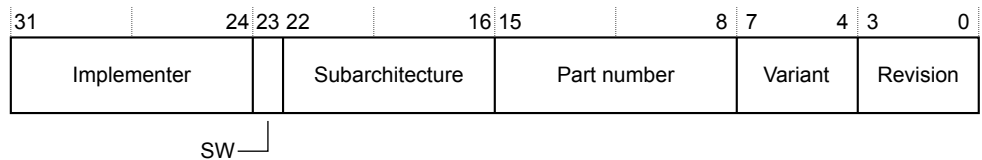


Figure 2-1 FPSID bit assignments

### Implementer, [31:24]

Indicates the implementer:

0x41 ARM Limited.

### SW, [23]

Software bit. This bit indicates that a system provides only software emulation of the floating-point instructions:

0 The system includes hardware support for floating-point operations.

### Subarchitecture, [22:16]

Subarchitecture version number:

0x03 VFPv3 architecture, or later, with no subarchitecture. The entire floating-point implementation is in hardware, and requires no software support code. The MVFR0, MVFR1 and MVFR2 registers indicate the VFP architecture version.

### Part number, [15:8]

Indicates the part number for the floating-point implementation:

0x40 v8-A profile

### Variant, [7:4]

Indicates the variant number:

0x1 Cortex-A32 processor.

### Revision, [3:0]

Indicates the revision number for the floating-point implementation:

0x1 r0p1.

To access the FPSID:

```
VMRS <Rt>, FPSID ; Read FPSID into Rt
```



## 2.4 Floating-Point Status and Control Register

The FPSCR characteristics are:

### Purpose

Provides floating-point system status information and control.

### Usage constraints

This register is accessible as follows:

EL0 (NS)	EL0 (S)	EL1 (NS)	EL1 (S)	EL2	EL3 (SCR.NS = 1)	EL3 (SCR.NS = 0)
Config	RW	Config	RW	Config	Config	RW

Access to this register depends on the values of CPACR.{cp10,cp11}, NSACR.{cp10,cp11}, HCPTR.{TCP10,TCP11} and FPEXC.EN. For details of which values of these fields allow access at which exception levels, see the *ARM® Architecture Reference Manual ARMv8, for ARMv8-A architecture profile*.

### Configurations

There is one copy of this register that is used in both Secure and Non-secure states.

### Attributes

FPSCR is a 32-bit register.

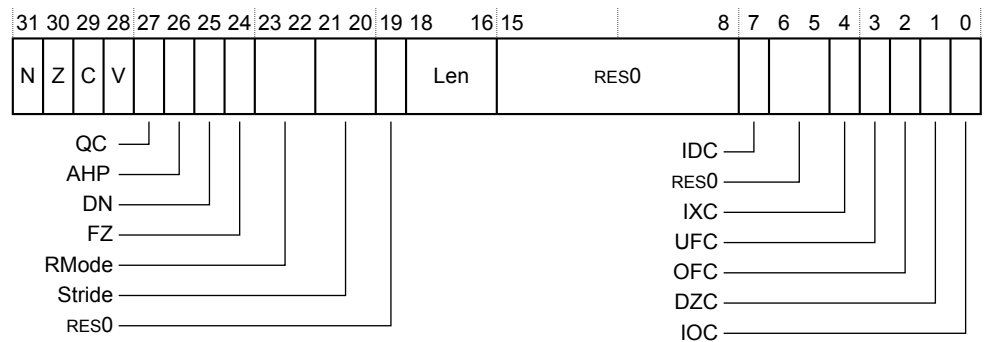


Figure 2-2 FPSCR bit assignments

### N, [31]

Floating-point Negative condition code flag.

Set to 1 if a floating-point comparison operation produces a less than result.

### Z, [30]

Floating-point Zero condition code flag.

Set to 1 if a floating-point comparison operation produces an equal result.

### C, [29]

Floating-point Carry condition code flag.

Set to 1 if a floating-point comparison operation produces an equal, greater than, or unordered result.

### V, [28]

Floating-point Overflow condition code flag.

Set to 1 if a floating-point comparison operation produces an unordered result.

**QC, [27]**

Cumulative saturation bit.

This bit is set to 1 to indicate that an Advanced SIMD integer operation has saturated after 0 was last written to this bit.

**AHP, [26]**

Alternative Half-Precision control bit:

- 0 IEEE half-precision format selected. This is the reset value.
- 1 Alternative half-precision format selected.

**DN, [25]**

Default NaN mode control bit:

- 0 NaN operands propagate through to the output of a floating-point operation. This is the reset value.
- 1 Any operation involving one or more NaNs returns the Default NaN.

The value of this bit only controls floating-point arithmetic. AArch32 Advanced SIMD arithmetic always uses the Default NaN setting, regardless of the value of the DN bit.

**FZ, [24]**

Flush-to-zero mode control bit:

- 0 Flush-to-zero mode disabled. Behavior of the floating-point system is fully compliant with the IEEE 754 standard. This is the reset value.
- 1 Flush-to-zero mode enabled.

The value of this bit only controls floating-point arithmetic. AArch32 Advanced SIMD arithmetic always uses the Flush-to-zero setting, regardless of the value of the FZ bit.

**RMode, [23:22]**

Rounding Mode control field:

- 0b00 *Round to Nearest* (RN) mode. This is the reset value.
- 0b01 *Round towards Plus Infinity* (RP) mode.
- 0b10 *Round towards Minus Infinity* (RM) mode.
- 0b11 *Round towards Zero* (RZ) mode.

The specified rounding mode is used by almost all floating-point instructions. AArch32 Advanced SIMD arithmetic always uses the Round to Nearest setting, regardless of the value of the RMode bits.

**Stride, [21:20]**

RES0.

**[19]**

Reserved, RES0.

**Len, [18:16]**

RES0.

**[15:8]**

Reserved, RES0.

**IDC, [7]**

Input Denormal cumulative exception bit. This bit is set to 1 to indicate that the Input Denormal exception has occurred since 0 was last written to this bit.

**[6:5]**

Reserved, RES0.

**IXC, [4]**

Inexact cumulative exception bit. This bit is set to 1 to indicate that the Inexact exception has occurred since 0 was last written to this bit.

**UFC, [3]**

Underflow cumulative exception bit. This bit is set to 1 to indicate that the Underflow exception has occurred since 0 was last written to this bit.

**OFC, [2]**

Overflow cumulative exception bit. This bit is set to 1 to indicate that the Overflow exception has occurred since 0 was last written to this bit.

**DZC, [1]**

Division by Zero cumulative exception bit. This bit is set to 1 to indicate that the Division by Zero exception has occurred since 0 was last written to this bit.

**IOC, [0]**

Invalid Operation cumulative exception bit. This bit is set to 1 to indicate that the Invalid Operation exception has occurred since 0 was last written to this bit.

To access the FPSCR:

```
VMRS <Rt>, FPSCR ; Read FPSCR into RtVMSR FPSCR, <Rt> ; Write Rt to FPSCR
```

————— **Note** —————

The Cortex-A32 processor implementation does not support the deprecated VFP short vector feature. Attempts to execute the associated VFP data-processing instructions result in an Undefined Instruction exception.

—————

## 2.5 Media and VFP Feature Register 0

The MVFR0 characteristics are:

### Purpose

Describes the features provided by the AArch32 Advanced SIMD and floating-point implementation.

### Usage constraints

This register is accessible as follows:

EL0 (NS)	EL0 (S)	EL1 (NS)	EL1 (S)	EL2	EL3 (SCR.NS = 1)	EL3 (SCR.NS = 0)
-	-	Config	RO	Config	Config	RO

Access to this register depends on the values of CPACR.{cp10,cp11}, NSACR.{cp10,cp11}, HCPTR.{TCP10,TCP11}, and FPEXC.EN. For details of which values of these fields allow access at which exception levels, see the *ARM® Architecture Reference Manual ARMv8, for ARMv8-A architecture profile*.

MVFR0 must be interpreted with MVFR1 and MVFR2. See [2.6 Media and VFP Feature Register 1](#) on page 2-22 and [2.7 Media and VFP Feature Register 2](#) on page 2-24.

### Configurations

There is one copy of this register that is used in both Secure and Non-secure states.

### Attributes

MVFR0 is a 32-bit register.

31	28	27	24	23	20	19	16	15	12	11	8	7	4	3	0								
FPRound				FPSHVec				FPSqrt				FPDivide				FPTrap		FPDP		FPSP		SIMDReg	

Figure 2-3 MVFR0 bit assignments

### FPRound, [31:28]

Indicates the rounding modes supported by the floating-point hardware:

0x1 All rounding modes supported.

### FPSHVec, [27:24]

Indicates the hardware support for floating-point short vectors:

0x0 Not supported.

### FPSqrt, [23:20]

Indicates the hardware support for floating-point square root operations:

0x1 Supported.

### FPDivide, [19:16]

Indicates the hardware support for floating-point divide operations:

0x1 Supported.

### FPTrap, [15:12]

Indicates whether the floating-point hardware implementation supports exception trapping:

0x0 Not supported.

### FPDP, [11:8]

Indicates the hardware support for floating-point double-precision operations:

0x2 Supported, VFPv3 or greater.

See the *ARM® Architecture Reference Manual ARMv8, for ARMv8-A architecture profile* for more information.

**FPSP, [7:4]**

Indicates the hardware support for floating-point single-precision operations:

0x2 Supported, VFPv3 or greater.

See the *ARM® Architecture Reference Manual ARMv8, for ARMv8-A architecture profile* for more information.

**SIMDReg, [3:0]**

Indicates support for the Advanced SIMD register bank:

0x2 Supported, 32 x 64-bit registers supported.

See the *ARM® Architecture Reference Manual ARMv8, for ARMv8-A architecture profile* for more information.

To access the MVFR0:

```
VMRS <Rt>, MVFR0 ; Read MVFR0 into Rt
```

## 2.6 Media and VFP Feature Register 1

The MVFR1 characteristics are:

### Purpose

Describes the features provided by the AArch32 Advanced SIMD and floating-point implementation.

### Usage constraints

This register is accessible as follows:

EL0 (NS)	EL0 (S)	EL1 (NS)	EL1 (S)	EL2	EL3 (SCR.NS = 1)	EL3 (SCR.NS = 0)
-	-	Config	RO	Config	Config	RO

Access to this register depends on the values of CPACR.{cp10,cp11}, NSACR.{cp10,cp11}, HCPTR.{TCP10,TCP11}, and FPEXC.EN. For details of which values of these fields allow access at which exception levels, see the *ARM® Architecture Reference Manual ARMv8, for ARMv8-A architecture profile*.

MVFR1 must be interpreted with MVFR0 and MVFR2. See [2.5 Media and VFP Feature Register 0](#) on page 2-20 and [2.7 Media and VFP Feature Register 2](#) on page 2-24

### Configurations

There is one copy of this register that is used in both Secure and Non-secure states.

### Attributes

MVFR1 is a 32-bit register.

31	28	27	24	23	20	19	16	15	12	11	8	7	4	3	0			
SIMDFMAC				FPHP			SIMDHP			SIMDSP			SIMDInt		SIMDLS		FPDNaN	FPFtZ

Figure 2-4 MVFR1 bit assignments

### SIMDFMAC, [31:28]

Indicates whether the Advanced SIMD and floating-point unit supports fused multiply accumulate operations:

0x1 Implemented.

### FPHP, [27:24]

Indicates whether the Advanced SIMD and floating-point unit supports half-precision floating-point conversion instructions:

0x2 Instructions to convert between half-precision and single-precision, and between half-precision and double-precision, implemented.

### SIMDHP, [23:20]

Indicates whether the Advanced SIMD and floating-point unit supports half-precision floating-point conversion operations:

0x1 Implemented.

### SIMDSP, [19:16]

Indicates whether the Advanced SIMD and floating-point unit supports single-precision floating-point operations:

0x1 Implemented.

### SIMDInt, [15:12]

Indicates whether the Advanced SIMD and floating-point unit supports integer operations:

0x1 Implemented.

**SIMDLS, [11:8]**

Indicates whether the Advanced SIMD and floating-point unit supports load/store instructions:

0x1 Implemented.

**FPDNaN, [7:4]**

Indicates whether the floating-point hardware implementation supports only the Default NaN mode:

0x1 Hardware supports propagation of NaN values.

**FPFtZ, [3:0]**

Indicates whether the floating-point hardware implementation supports only the Flush-to-Zero mode of operation:

0x1 Hardware supports full denormalized number arithmetic.

To access the MVFR1:

```
VMRS <Rt>, MVFR1 ; Read MVFR1 into Rt
```

## 2.7 Media and VFP Feature Register 2

The MVFR2 characteristics are:

### Purpose

Describes the features provided by the AArch32 Advanced SIMD and floating-point implementation.

### Usage constraints

This register is accessible as follows:

EL0 (NS)	EL0 (S)	EL1 (NS)	EL1 (S)	EL2	EL3 (SCR.NS = 1)	EL3 (SCR.NS = 0)
-	-	Config	RO	Config	Config	RO

Access to this register depends on the values of CPACR.{cp10,cp11}, NSACR.{cp10,cp11}, HCPTR.{TCP10,TCP11}, and FPEXC.EN. For details of which values of these fields allow access at which exception levels, see the *ARM® Architecture Reference Manual ARMv8, for ARMv8-A architecture profile*.

MVFR2 must be interpreted with MVFR0 and MVFR1. See [2.5 Media and VFP Feature Register 0](#) on page 2-20 and [2.6 Media and VFP Feature Register 1](#) on page 2-22

### Configurations

There is one copy of this register that is used in both Secure and Non-secure states.

### Attributes

MVFR2 is a 32-bit register.



Figure 2-5 MVFR2 bit assignments

### [31:8]

Reserved, RES0.

### FPMisc, [7:4]

Indicates support for miscellaneous VFP features.

0x4 Supports:

- Floating-point selection.
- Floating-point Conversion to Integer with Directed Rounding modes.
- Floating-point Round to Integral Floating-point.
- Floating-point MaxNum and MinNum.

### SIMDMisc, [3:0]

Indicates support for miscellaneous Advanced SIMD features.

0x3 Supports:

- Floating-point Conversion to Integer with Directed Rounding modes.
- Floating-point Round to Integral Floating-point.
- Floating-point MaxNum and MinNum.

To access the MVFR2:

```
VMRS <Rt>, MVFR2 ; Read MVFR2 into Rt
```



## 2.8 Floating-Point Exception Control register

The FPEXC characteristics are:

### Purpose

Provides a global enable for the Advanced SIMD and floating-point support, and indicates how the state of this support is recorded.

### Usage constraints

This register is accessible as follows:

EL0 (NS)	EL0 (S)	EL1 (NS)	EL1 (S)	EL2	EL3 (SCR.NS = 1)	EL3 (SCR.NS = 0)
-	-	Config	RW	Config	Config	RW

Access to this register depends on the values of CPACR.{cp10,cp11}, NSACR.{cp10,cp11}, and HCPTR.{TCP10,TCP11}. For details of which values of these fields allow access at which exception levels, see the *ARM® Architecture Reference Manual ARMv8, for ARMv8-A architecture profile*.

### Configurations

There is one copy of this register that is used in both Secure and Non-secure states.

### Attributes

FPEXC is a 32-bit register.

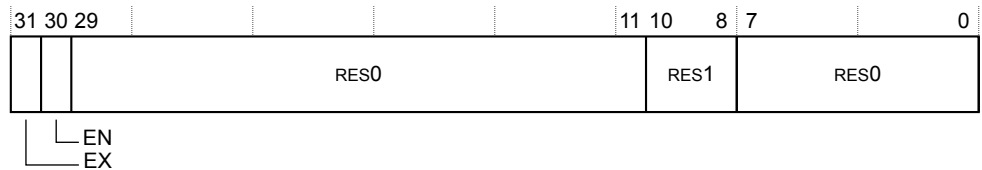


Figure 2-6 FPEXC bit assignments

### EX, [31]

Exception bit. The Cortex-A32 processor implementation does not generate asynchronous floating-point exceptions, therefore this bit is RES0.

### EN, [30]

Global enable for the Advanced SIMD and floating-point support:

- 0 The Advanced SIMD and floating-point support is disabled. This is the reset value.
- 1 The Advanced SIMD and floating-point support is enabled and operates normally.

### [29:11]

Reserved, RES0.

### [10:8]

Reserved, RES1.

### [7:0]

Reserved, RES0.

To access the FPEXC register:

```
VMRS <Rt>, FPEXC ; Read FPEXC into Rt
```

# Appendix A

## Revisions

This appendix describes the technical changes between released issues of this book.

It contains the following sections:

- [A.1 Revisions on page Appx-A-27](#).

## A.1 Revisions

This appendix describes the technical changes between released issues of this book.

**Table A-1 Issue 0000-00**

<b>Change</b>	<b>Location</b>	<b>Affects</b>
First release for r0p0	-	-

**Table A-2 Issue 0001-00**

<b>Change</b>	<b>Location</b>	<b>Affects</b>
First release for r0p1	On front page and in document history table.	r0p1